



# LEOTECH

## INTRODUCTION:

The Bus Bar System Insulators has been designed for a variety needs in Electrical Panels, Switch Boards and Electrical Distribution Panels and Bus Bar trunkings. The Raw Material has designed and formulated by **LEOTECH** to have good electrical and Mechanical properties, Non-Hygroscopic, self-extinguishing and excellent behaviour even when used on polluted environment. **LEOTECH** bus bar supports are designed, manufactured and Quality tested to meet International standards.

The product is manufactured by using Raw material of Fiber Reinforced Plastics such as the Sheet Molding Compound (SMC) and the Dough Molding Compound (DMC), specially formulated by **LEOTECH** raw material division to be suitable for use in very rugged environment conditions.

## TYPES OF PRODUCT:

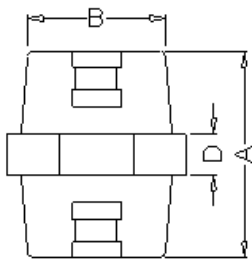
**LEOTECH** manufactures a range of Bus bar supports, they are tabulated below:

- **Stand off Insulators**
  - Hecotogonal type insulators
  - Round type insulators
  - Conical type insulators
  - Drum type insulators
  - Hexagonal type insulators
  
- **Neutral Type Supports**
  
- **Finger Type Supports**
  - One way type supports
  - Two way type supports
  - Three way type supports
  - Four way type supports
  - Five way type supports
  
- **Fixed Type Supports**
  - Single Pole Fixed (SPF) Type Supports
    - ◆ Single Ended SPF
    - ◆ Double Ended SPF
  - Multi Pole Fixed (MPF) Type Supports
    - ◆ Single Ended MPF
    - ◆ Double Ended MPF
  
- **Combi Supports**

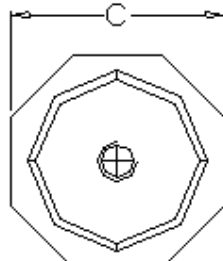
**Regd. Office & Works at : P.B. No 4427, # 70, 2<sup>nd</sup> Main Road,  
Industrial Town, Rajajinagar Bangalore – 560 044  
Ph: +91 80 23303182 Fax: +91 80 23351458  
email: [info@leotechindia.com](mailto:info@leotechindia.com) website: [www.leotechindia.com](http://www.leotechindia.com)**

## Hoctagonal Series

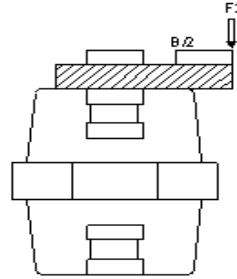
	A	B	C	D	Insert*	F1	F2	T	P
<b>H400632</b>	40	25	32	10	M6	350	575	2.5	650
<b>H400832</b>	40	25	32	10	M8	350	600	5.25	700
<b>H400641</b>	40	34	41	10	M6	375	625	2.1	700
<b>H400841</b>	40	34	41	10	M8	425	710	5.25	800
<b>H401041</b>	40	34	41	10	M10	450	800	6	1100
<b>H450841</b>	45	29	41	10	M8	450	850	8	800
<b>H451041</b>	45	29	41	10	M10	475	900	9	1150
<b>H450841</b>	45	34	41	10	M8	425	900	6.5	900
<b>H451041</b>	45	34	41	10	M10	500	1000	9	1100
<b>H451050</b>	45	40	50	10	M10	550	1250	10.01	1350



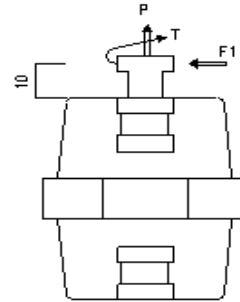
ELEVATION



TOP VIEW



FORCE DIAGRAM



	A	B	C	D	Insert*	F1	F2	T	P
<b>H250525</b>	25	20	25	6	M5	150	375	1.5	450
<b>H250625</b>	25	20	25	6	M6	175	400	1.75	523
<b>H300532</b>	30	24	32	8	M5	200	500	1.5	575
<b>H300632</b>	30	24	32	8	M6	800	625	1.75	650
<b>H350632</b>	35	25	32	9	M6	325	650	2	700
<b>H350832</b>	35	25	32	9	M8	350	650	4.5	810
<b>H350841</b>	35	29	41	9	M8	400	710	5.5	850
<b>H351041</b>	35	29	41	9	M10	400	700	6.5	900





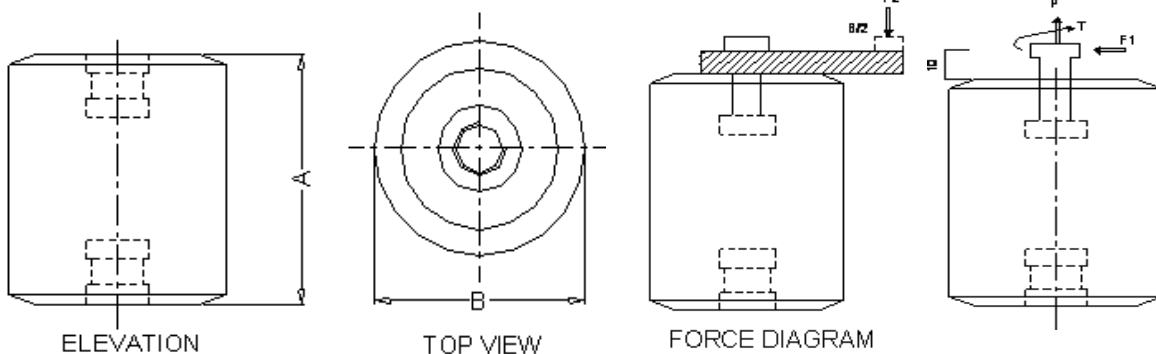
# LEOTECH

	A	B	C	D	Insert*	F1	F2	T	P
<b>H500841</b>	50	31	41	10	M8	500	1050	8	1100
<b>H501041</b>	50	31	41	10	M10	550	1100	9	1250
<b>H501241</b>	50	31	41	10	M12	625	1250	11	1375
<b>H601055</b>	60	39	55	11	M10	650	1320	11.5	1450
<b>H601255</b>	60	39	55	11	M12	700	1400	12	1550
<b>H751265</b>	75	50	65	15	M12	725	1600	12	1700
<b>H751665</b>	75	50	65	15	M16	725	1800	12	1200



## Round Series

Product code	Dimension			Force			
	A	B	Insert*	F1	F2	T	P
<b>R3006</b>	30	30	M6	300	600	1.5	500
<b>R3008</b>	30	30	M8	375	700	4.5	600
<b>R4008</b>	40	40	M8	400	800	5.2	750
<b>R4010</b>	40	40	M10	500	1000	7	825
<b>R5008</b>	50	40	M8	450	800	5.5	900
<b>R5010</b>	50	40	M10	475	950	8.5	1150
<b>R5012</b>	50	40	M12	600	1150	10	1200
<b>R6010</b>	60	50	M10	650	1650	11	1350
<b>R6012</b>	60	50	M12	650	2000	12	1500
<b>R6310</b>	63	25	M10	350	650	9	750



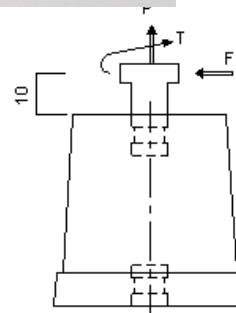
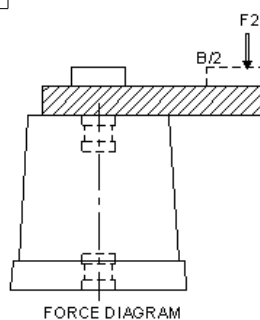
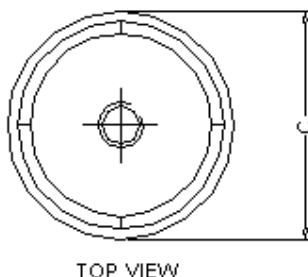
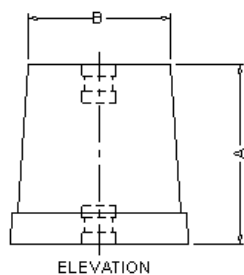
**Regd. Office & Works at : P.B. No 4427, # 70, 2<sup>nd</sup> Main Road,  
Industrial Town, Rajajinagar Bangalore – 560 044  
Ph: +91 80 23303182 Fax: +91 80 23351458  
email: [info@leotechindia.com](mailto:info@leotechindia.com) website: [www.leotechindia.com](http://www.leotechindia.com)**



# LEOTECH

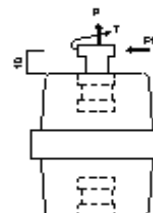
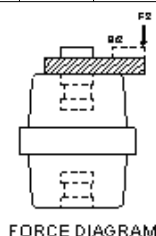
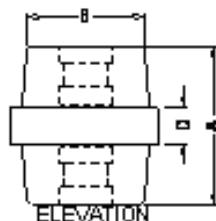
## Conical Series

Product code	Dimension (mm)				Force			
	A	B	C	Insert*	F1	F2	T	P
C3006	30	26	30	M6	225	400	2.5	600
C3008	30	26	30	M8	275	550	6	725
C4008	40	33	40	M8	375	600	6	750
C4010	40	33	40	M10	400	750	7.5	850
C5010	50	41	50	M10	500	850	8	1000
C5012	50	41	50	M12	550	900	9	1200
C6010	60	43	60	M10	600	1200	9	1400
C6012	60	43	60	M12	600	1350	10	1550



## Drum Series

Product code	Dimension					Force			
	A	B	C	D	Insert*	F1	F2	T	P
DS3506	35	26	32	8	M6	300	400	2.5	600
DS3508	35	26	32	8	M8	350	500	5	800
DS5108	51	29	36	13	M8	425	600	6	950
DS5110	51	29	36	13	M10	400	700	9	1350
DS7610	76	35	50	16	M10	675	1200	10.5	1650
DS7612	76	35	50	16	M12	700	1300	11.5	1800



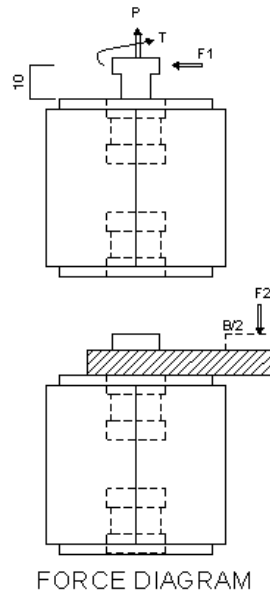
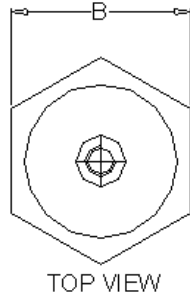
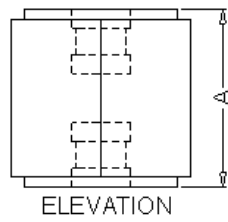
Regd. Office & Works at : P.B. No 4427, # 70, 2<sup>nd</sup> Main Road,  
 Industrial Town, Rajajinagar Bangalore – 560 044  
 Ph: +91 80 23303182 Fax: +91 80 23351458  
 email: [info@leotechindia.com](mailto:info@leotechindia.com) website: [www.leotechindia.com](http://www.leotechindia.com)



# LEOTECH

## Hexagon Series

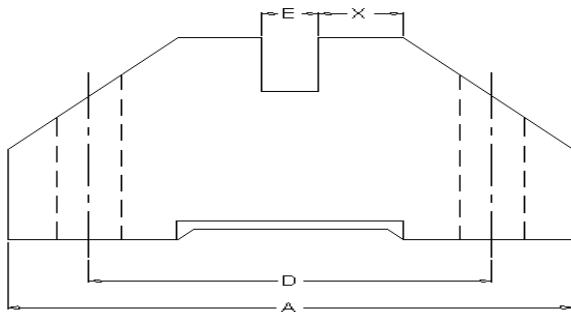
	A	B	Insert*	F1	F2	T	P
<b>HEX2506</b>	25	25	M6	280	300	2.5	600
<b>HEX3506</b>	35	35	M6	400	750	2.5	800
<b>HEX3508</b>	35	35	M8	450	800	5.5	950
<b>HEX4508</b>	45	45	M8	500	850	6	1000
<b>HEX4510</b>	45	45	M10	600	1000	11	1150
<b>HEX6010</b>	60	60	M10	750	1350	12	1850
<b>HEX6012</b>	60	60	M12	800	1400	>12	2000



**Regd. Office & Works at : P.B. No 4427, # 70, 2<sup>nd</sup> Main Road,  
 Industrial Town, Rajajinagar Bangalore – 560 044  
 Ph: +91 80 23303182 Fax: +91 80 23351458  
 email: [info@leotechindia.com](mailto:info@leotechindia.com) website: [www.leotechindia.com](http://www.leotechindia.com)**

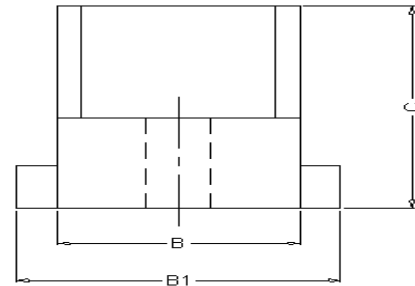
## Single Pole Fixed (SPF) Type of Supports

Product Code	Description						
	A	B	B1	C	D	E	X
SPF (C)206-106	65	65	-	30	7	7	-
SPF(S)-106	70	30	40	38	50	7	-
SPF(S)-206	90	30	40	40	70	7	8
SPF(S)-306	110	30	40	40	90	7	8
SPF(S)-110	70	30	40	38	50	11	-
SPF(S)-210	90	30	40	40	70	11	8
SPF(S)-310	110	30	40	40	90	11	8

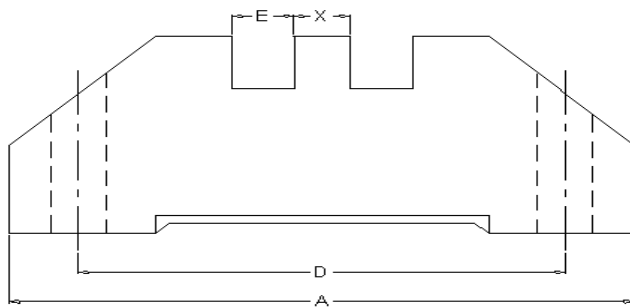


**FRONT VIEW**

LTSPF106 / LTSPF110

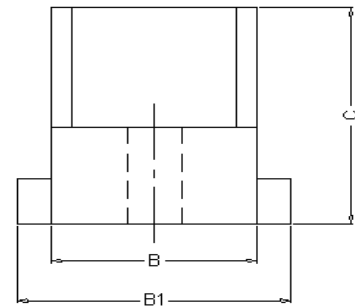


**SIDE VIEW**

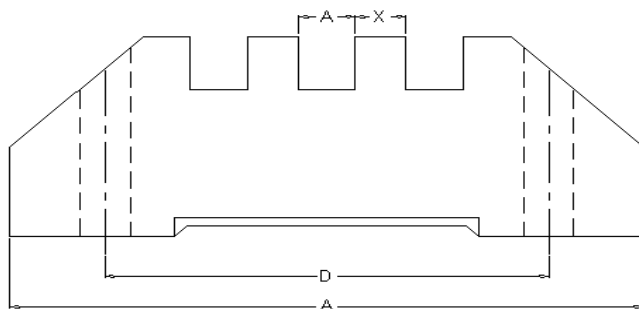


**FRONT VIEW**

LTSPF206 / LTSPF210

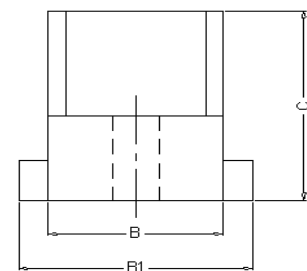


**SIDE VIEW**



**FRONT VIEW**

LTSPF306 / LTSPF310



**SIDE VIEW**

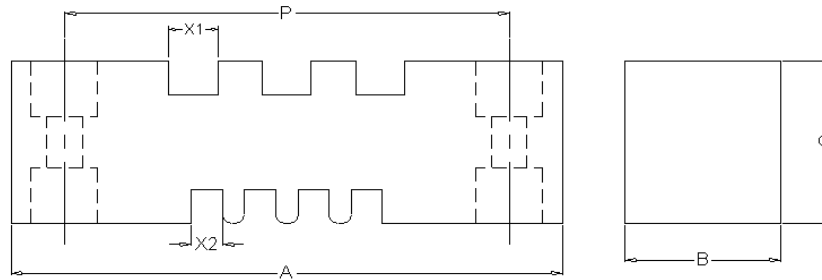


# LEOTECH

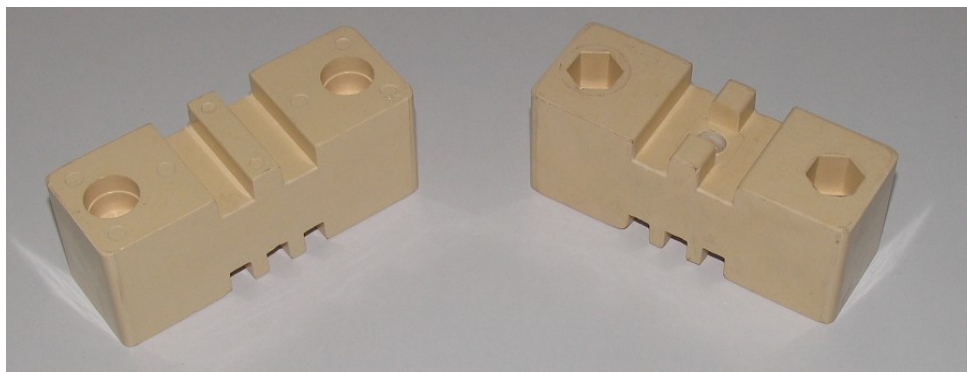
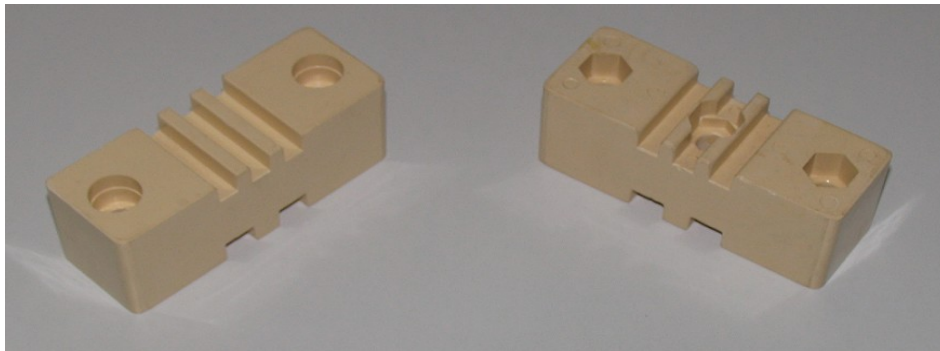
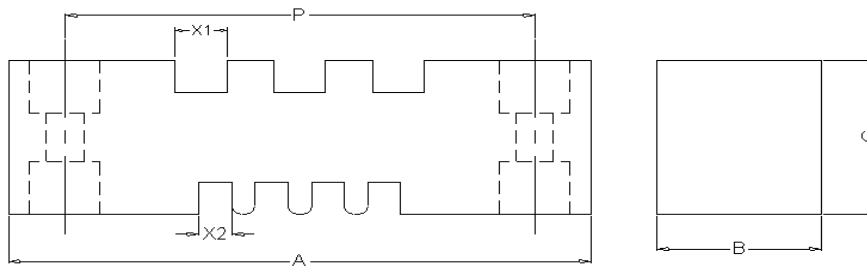
## Double Ended SPF Type of Supports

SPF(D)-306/210	100	35	38	75	11	7
SPF(D)-406/310	124	35	38	100	11	7

**SPF306**



**SPF 406**



**Regd. Office & Works at : P.B. No 4427, # 70, 2<sup>nd</sup> Main Road,  
 Industrial Town, Rajajinagar Bangalore – 560 044  
 Ph: +91 80 23303182 Fax: +91 80 23351458  
 email: [info@leotechindia.com](mailto:info@leotechindia.com) website: [www.leotechindia.com](http://www.leotechindia.com)**

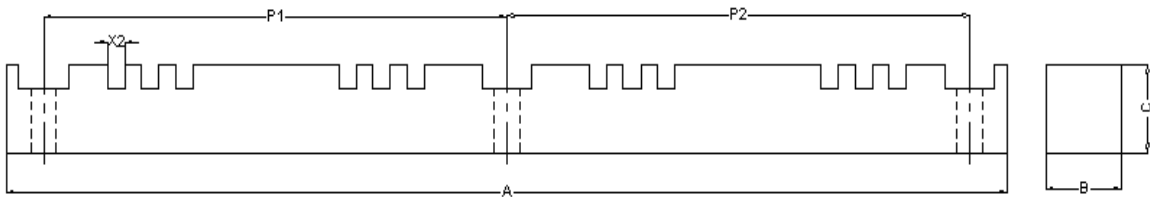


# LEOTECH

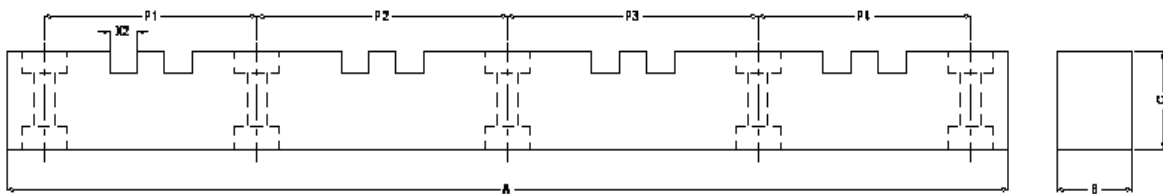
## Multi Pole Fixed Type Supports (MPF)

### Single Ended MPF Type of Supports

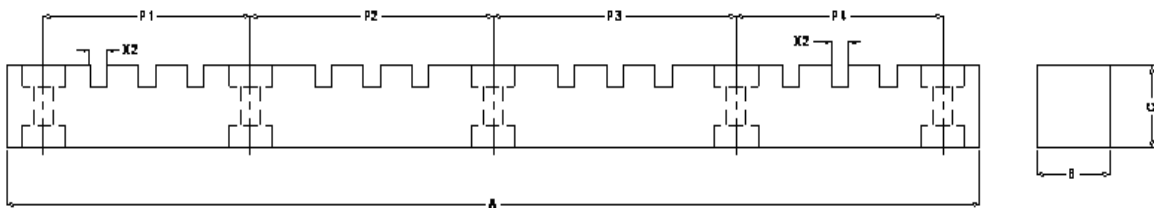
Product Code	Description								
	A	B	C	X1	X2	P1	P2	P3	P4
MPF (S) 306 - 4 - 400	400	30	30	-	7	85	100	100	85
MPF (S) 210 - 4 - 400	400	30	35	-	11	85	100	100	85
MPF (S) 306 - 4 - 430	430	21.5	30	-	7	100	100	100	100
MPF (S) 210 - 4 - 430	430	21.5	30	-	11	100	100	100	100
MPF (S) 306 - 4 - 530	530	38	35	-	7	120	120	120	120
MPF (S) 210 - 4 - 530	530	38	35	-	11	120	120	120	120



MPF(S) 306 - 4 - 430  
MPF (S) 210 - 4 - 430



MPF(S)210 - 4 - 400  
MPF (S)210 - 4 - 530



**Regd. Office & Works at : P.B. No 4427, # 70, 2<sup>nd</sup> Main Road,  
Industrial Town, Rajajinagar Bangalore – 560 044  
Ph:+91 80 23303182 Fax:+91 80 23351458  
email:[info@leotechindia.com](mailto:info@leotechindia.com) website:[www.leotechindia.com](http://www.leotechindia.com)**





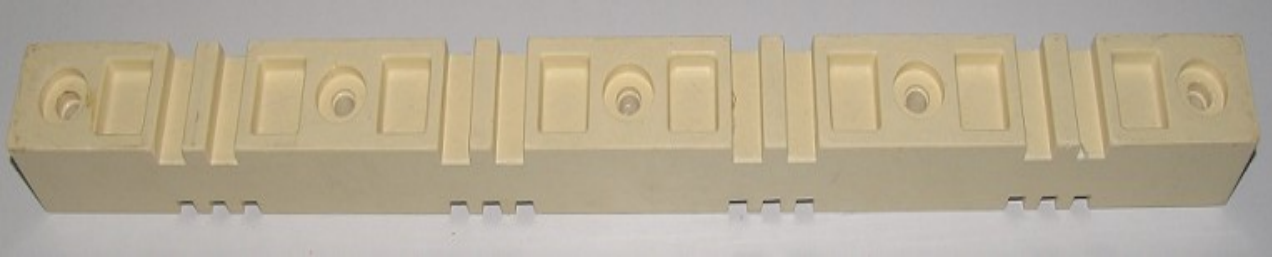
# LEOTECH

MPF(S) 360 – 4 – 400

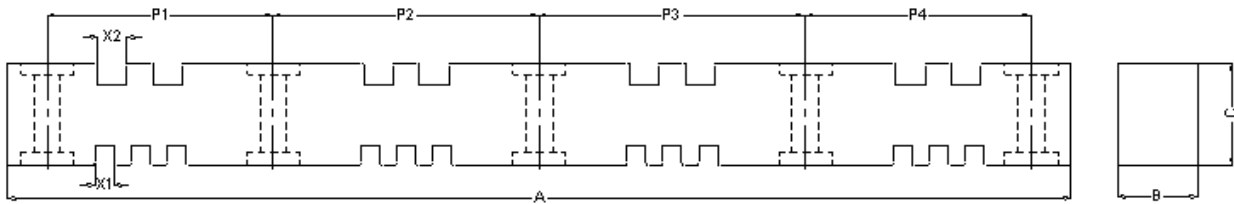
MPF(S) 360 – 4 – 530

## Double Ended MPF Type of Supports

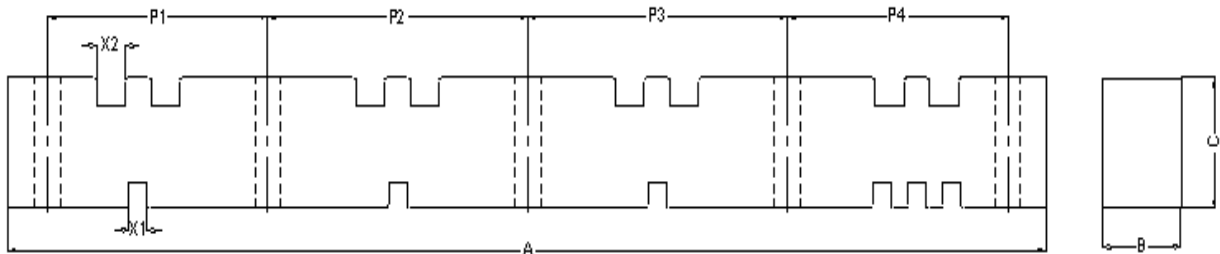
Product Code	Description								
	A	B	C	X1	X2	P1	P2	P3	P4
MPF (D) 306/210 - 4 - 400	400	30	40	7	11	85	100	100	85
MPF (D) 306/210 - 4 - 530	530	38	42	7	11	120	120	120	120
MPF (D) 110/210 - 4 - 400	400	20	60	11	11	94	94	90	94



MPF (D) 306/210 - 4 - 530



MPF(D) 306/210 - 4 - 400  
MPF(D) 306/210-4-530

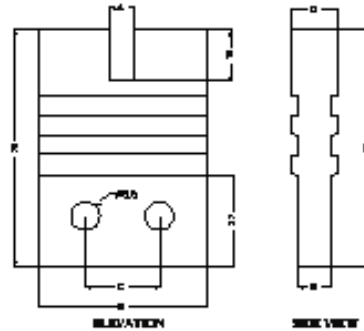


**Regd. Office & Works at : P.B. No 4427, # 70, 2<sup>nd</sup> Main Road,  
Industrial Town, Rajajinagar Bangalore – 560 044  
Ph: +91 80 23303182 Fax: +91 80 23351458  
email: [info@leotechindia.com](mailto:info@leotechindia.com) website: [www.leotechindia.com](http://www.leotechindia.com)**

## Finger Type Support

### One Way Finger Type Supports

Product code	Dimension					Force	
	A	B	C	D	E	F1	F2
SFT-6	7.2	50	22	14	10	1900	625
SFT(W)-6	7.2	60	32	14	10	2300	625
SFT(EW)-6	7.2	70	40	20	16	3900	900
SFT-10	11	50	22	14	10	1950	625
SFT(W)-10	11	60	32	14	10	2300	625
SFT(EW)-10	11	70	40	20	16	3900	900
SFT-12	13.7	50	22	14	10	1900	625
SFT(W)-12	13.7	60	32	14	10	2300	625
SFT(EW)-12	13.7	70	40	20	16	3900	900

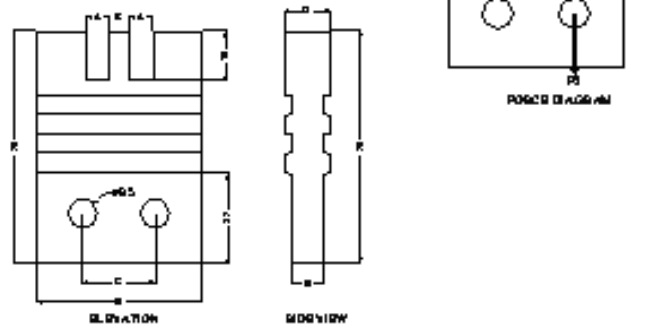


### Torque – Force Reference Chart

SYMBOL	DESCRIPTION	UNITS
F1	Force X – X Axis	Kg
F2	Force Y – Y Axis	Kg

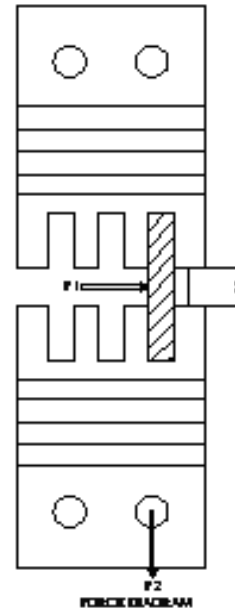
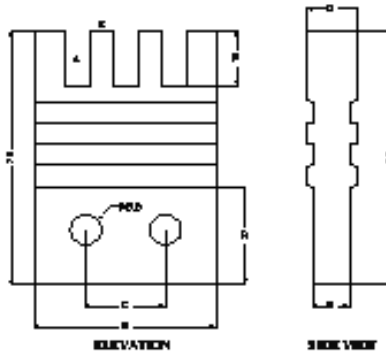
### Two Way Finger Type Supports

Product code	Dimension						Force	
	A	B	C	D	E	X	F1	F2
TFT(W)-6	7.2	60	32	14	10	6	1750	650
TFT(EW)-6	7.2	70	40	20	16	6	3200	980
TFT(W)-10	11	60	32	14	10	9.5	900	650
TFT(EW)-10	11	70	40	20	16	9.5	1800	980
TFT(W)-12	13.7	70	32	14	10	12.5	1450	650
TFT(EW)-12	13.7	70	40	20	16	12.5	1800	980



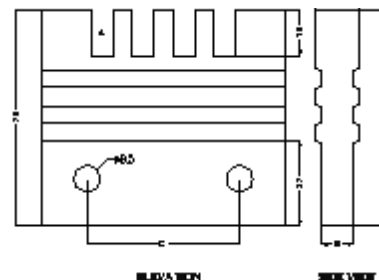
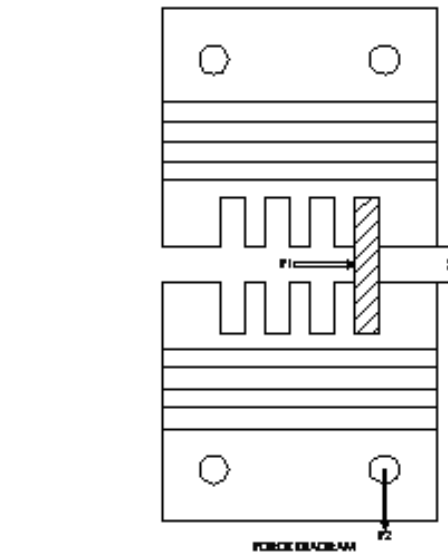
## Three Way Finger Type Supports

Product code	Dimension						Force	
	A	B	C	D	E	X	F1	F2
ThFT(W)-6	7.2	70	32	14	10	6	975	600
ThFT(EW)-6	7.2	70	40	20	16	6	2200	875
ThFT(W)-10	11	80	50	14	10	9.5	900	600
ThFT(EW)-12	11	100	50	20	16	9.5	2860	875
ThFT(W)-12	13.7	90	50	15	11	12.5	850	600
ThFT(EW)-12	13.7	100	50	20	16	12.5	2150	875



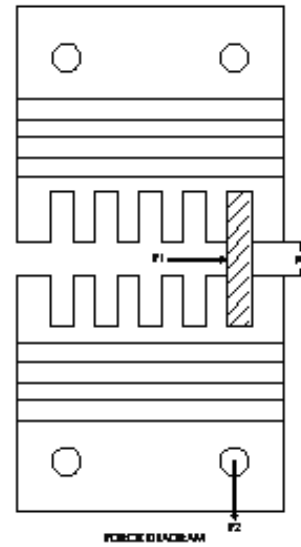
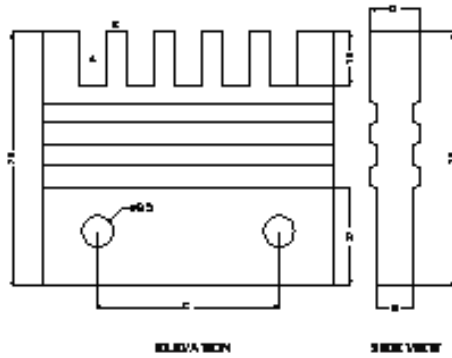
## Four Way Finger Type Supports

Product code	Dimension						Force	
	A	B	C	D	E	X	F1	F2
FFT(W)-6	7.2	80	50	14	10	6	1450	625
FFT(EW)-6	7.2	100	50	20	16	6	3400	900
FFT(EW)-10	11	130	80	20	16	9.5	2400	900
FFT(EW)-12	13.7	130	80	20	16	12.5	2550	900



## Five Way Finger Type Supports

Product code	Dimension						Force	
	A	B	C	D	E	X	F1	F2
FiFT(W)-6	7.2	100	50	20	16	6	2150	925
FiFT(EW)-6	7.2	100	50	20	16	6	3600	900
FiFT(EW)-10	11	130	80	20	16	9.5	2450	900
FiFT(EW)-12	13.7	150	80	20	16	12.5	2350	925

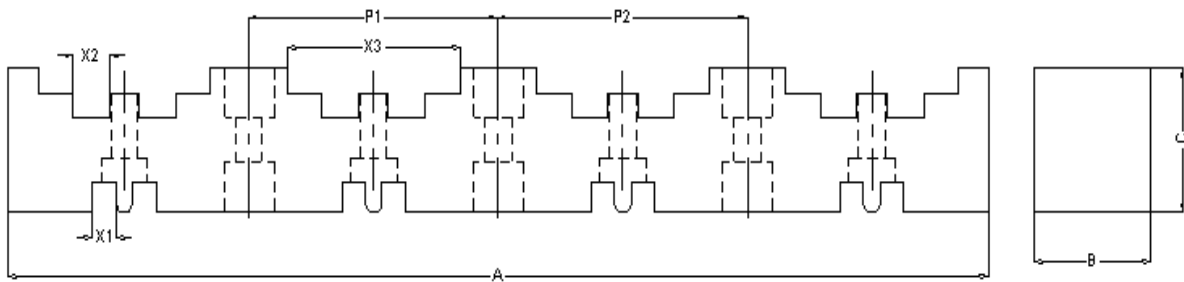
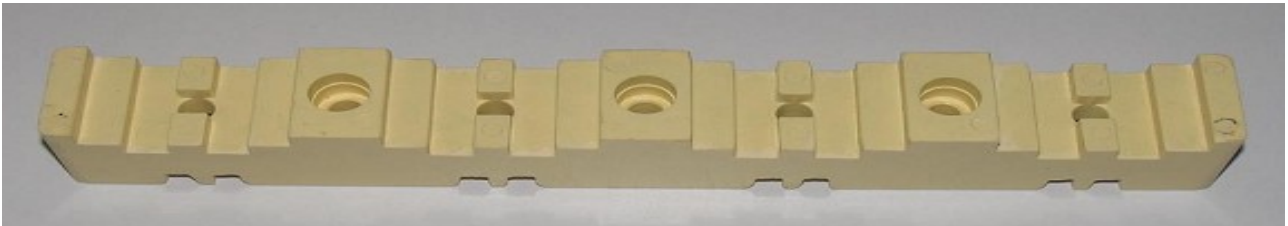




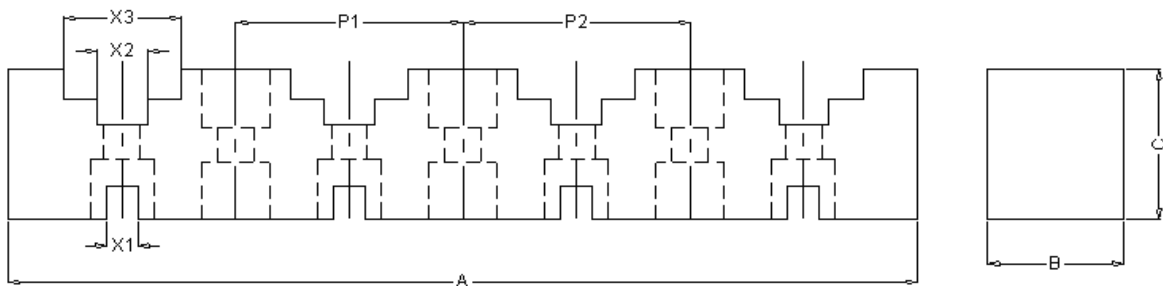
# LEOTECH

## COMBI SUPPORTS (CS)

Product Code	Description							
	A	B	C	X1	X2	X3	P1	P2
CS-206/210-4-295	295	35	38	7	11	52	75	75
CS-106/110-4-200	200	30	35	7	11	26	50	50



**CS 106/110-4-200**

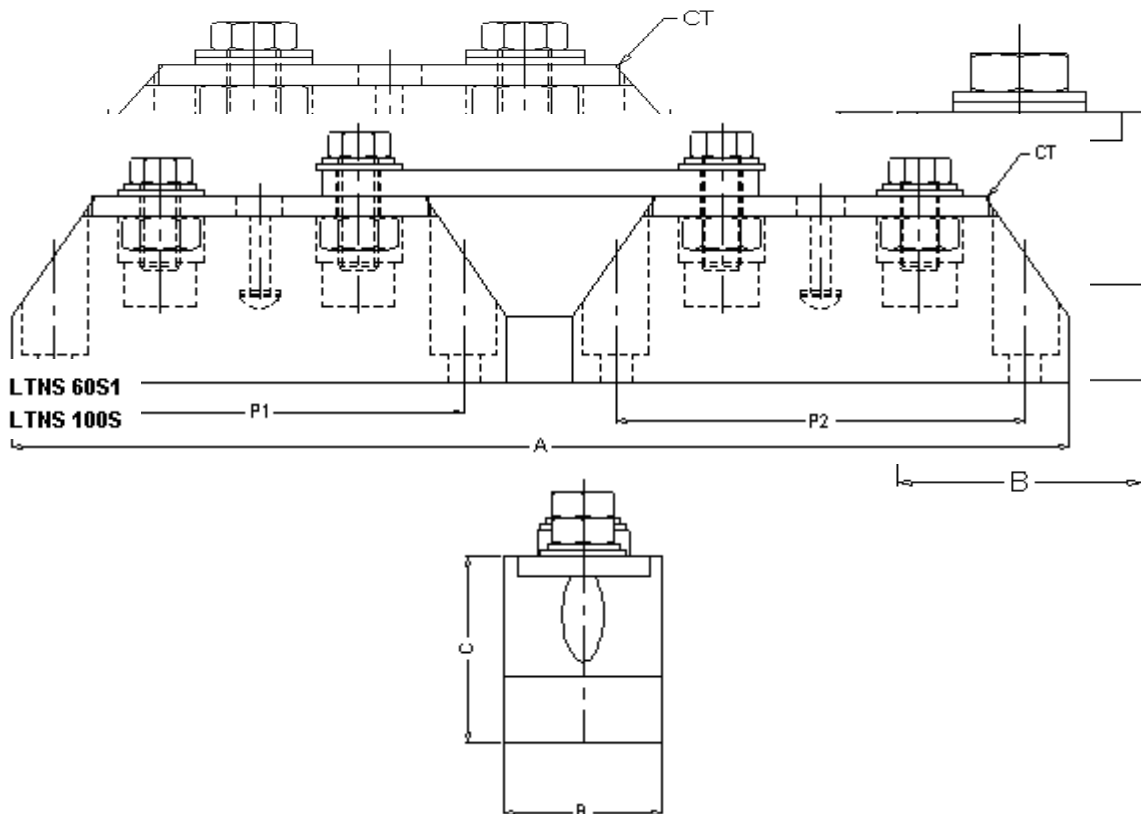


**CS 206/210-4-295**

**Regd. Office & Works at : P.B. No 4427, # 70, 2<sup>nd</sup> Main Road,  
 Industrial Town, Rajajinagar Bangalore – 560 044  
 Ph: +91 80 23303182 Fax: +91 80 23351458  
 email: [info@leotechindia.com](mailto:info@leotechindia.com) website: [www.leotechindia.com](http://www.leotechindia.com)**

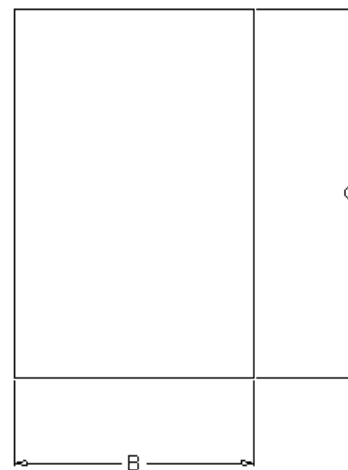
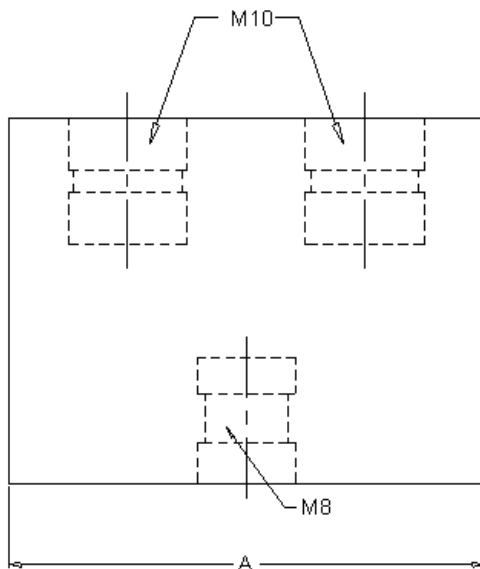
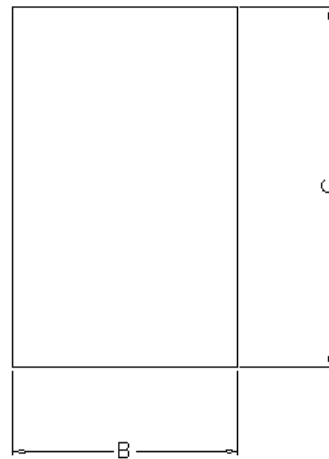
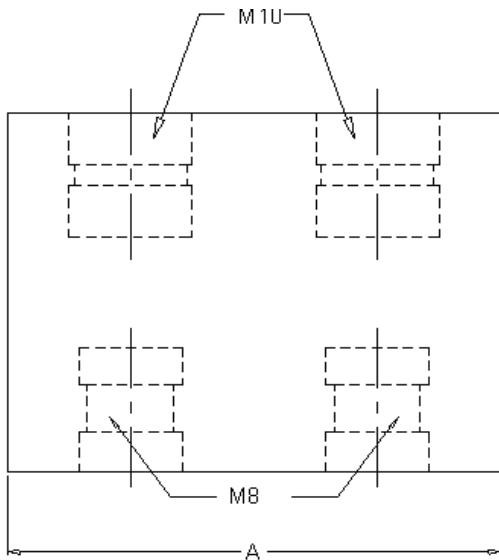
## NEUTRAL BAR SUPPORTS

	A	B	C	P1	P2	Copper Thickness
NS 60(S)	75	24	28	62	-	3.2
NS100(S)	75	24	28	62	-	4.8
NS 60(D)	157	24	28	62	62	3.2
NS100(D)	157	24	28	62	62	4.8
NS200	180	32	30	164	-	6.3
NS-208-210	60	30	45	-	-	-
NS-108-210	60	30	45	-	-	-





# LEOTECH



**Regd. Office & Works at : P.B. No 4427, # 70, 2<sup>nd</sup> Main Road,  
Industrial Town, Rajajinagar Bangalore – 560 044  
Ph: +91 80 23303182 Fax: +91 80 23351458  
email: [info@leotechindia.com](mailto:info@leotechindia.com) website: [www.leotechindia.com](http://www.leotechindia.com)**



# LEOTECH

For all Insulator Series

## Torque – Force Reference Chart

<b>SYMBOL</b>	<b>DESCRIPTION</b>	<b>UNITS</b>
F1	Force X – X Axis	Kg
F2	Force Y – Y Axis	Kg
P	Pulling Force	Kg
T	Torque applied to bolt	Kgm

The details of the material used in the various support are as follows:

<b>SL.NO</b>	<b>DESCRIPTION</b>	<b>UNITS</b>	<b>SPECIFICATION</b>	<b>DMC</b>	<b>SMC</b>
1	Specific Gravity		BS 2782	1.81 – 1.9	1.81 – 1.9
2	Tensile Strength	Kgs / sqcm	BS 2782	400 – 425	750
3	Compression Strength	Kgs / sqcm	BS 2782	1100 – 1250	1900
4	Flexural Strength	Kgs / sqcm	BS 2782	700	1650
5	Impact Strength	Kgs / sqcm	BS 2782	18 – 22	50
6	Breakdown Voltage	KV / mm	BS 2782	11	11
7	Arc Resistance	Sec	ASTM D 495	180	180
8	Track Resistance	Volts	IEC 112	1000	1000
9	Water Absorption	%	BS 2782	< 0.2	< 0.2
10	Surface Resistivity	Log 10 ohms	BS 2782	12	12
11	Volume Resistivity	Log 10 ohms cms	BS 2782	13	13
12	Flame Retardancy	-----Self Extinguishing-----			

**Regd. Office & Works at : P.B. No 4427, # 70, 2<sup>nd</sup> Main Road,  
Industrial Town, Rajajinagar Bangalore – 560 044**  
**Ph: +91 80 23303182 Fax: +91 80 23351458**  
**email: [info@leotechindia.com](mailto:info@leotechindia.com) website: [www.leotechindia.com](http://www.leotechindia.com)**